

YONKERS SHOPPING CENTER

1717 Central Park Avenue
Yonkers, NY, 10710

Join CVS Pharmacy, Outback Steakhouse, & Chuck E. Cheese
3,300 Square Feet Available - Last Remaining Space!



3 THINGS TO KNOW:

- + 56K Sq Ft Center w/280+ On-site Spaces
- ! 43,060 Cars/Day of Daily Traffic
- 📍 \$10,000 Per Month

DEMOGRAPHICS:

Population:	2 Miles	5 Miles	10 Miles
	80,064	520,643	2,369,590
Med. Income:	\$105,781	\$84,949	\$62,517

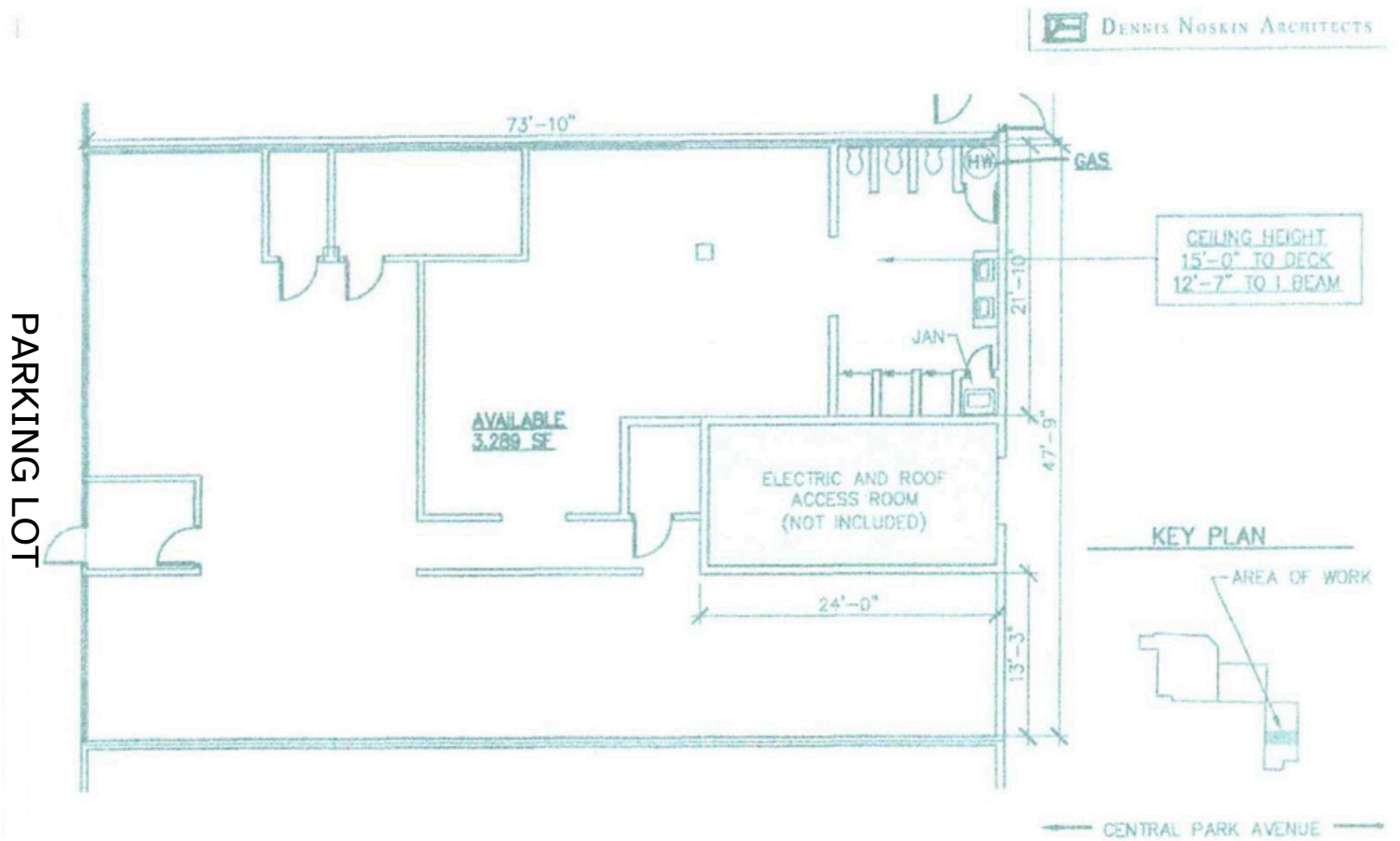
CONTACT: Rick Stassa

Emerald Commercial Properties, LLC
rick@emeraldcpnny.com
646-960-6800
www.emeraldcpnny.com



All information furnished herein is from sources deemed reliable. No warranty or representation is made to the accuracy thereof and it is submitted subject to errors, omissions, change of price, prior sale, or withdrawal without notice.

FLOOR PLAN



JOB TITLE: SPACE 3
DWG TITLE: MARKETING PLAN
© 2020 DENNIS NOSKIN ARCHITECT, P.C.

JOB No.: 20023
SCALE: 3/32"=1'-0"
ISSUE DATE: 2.19.20

